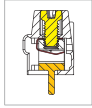


MA112 PCB Terminal Block, Modular

MA



DIMENSIONS/POSITIONS		MA112-500M
間距	Pitch	5.00mm
位數	Poles	2 ~ 3Poles
塑膠本體	Housing Material	PA 66
彈片	Spring	Stainless Strip Steel
端子	Contact	Brass, Tin Plated
螺紋	Screw Thread	M2.6, Steel, Zinc Plated
電線線徑	Wire Size	12 ~ 26AWG
剝線長度	Wire Strip Length	5mm
PCB孔徑	PCB Hole Diameter	1.3mm
最大緊固扭矩	Tightening Torque, Max.	4.0 Lb-in
環境作業溫度	Operating Temperature	-40°C to +105°C

TECHNICAL DATA		
連接符合標準 Connection in acc. with standard EN-VDE		
額定電流 I _n	Nominal Current I _n	15A
額定橫截面	Nominal Cross Section	-
最大負載電流	Maximum load current	15A
絕緣材料	Insulating Material	PA
阻燃等級,符合UL94 Inflammability class acc. to UL94		V0
額定電壓,UL/CUL Nominal voltage, UL/CUL		300V
額定電流,UL/CUL Nominal current, UL/CUL		15A

