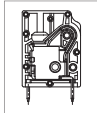
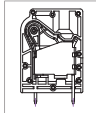


# MPX410 PCB Spring Type Terminal Block



MPX410-750



MPX410-100



## DIMENSIONS/POSITIONS

| DIMENSIONS/POSITIONS |                       | MPX410-750            | MPX410-100            |
|----------------------|-----------------------|-----------------------|-----------------------|
| 間距                   | Pitch                 | 7.50mm                | 10.00mm               |
| 位數                   | Poles                 | 2 ~ 12Poles           | 2 ~ 9Poles            |
| 塑膠本體                 | Housing Material      | PA 66                 | PA 66                 |
| 端蓋                   | Cover                 | PA 66                 | PA 66                 |
| 端子                   | Contact               | Copper, Tin Plated    | Copper, Tin Plated    |
| 彈片                   | Spring                | Stainless Strip Steel | Stainless Strip Steel |
| 保護鐵片                 | Metal Frame           | Steel, Zinc Plated    | Steel, Zinc Plated    |
| 電線線徑                 | Wire Size             | 8 ~ 24AWG             | 4 ~ 20AWG             |
| 剝線長度                 | Wire Strip Length     | 15mm                  | 18mm                  |
| PCB孔徑                | PCB Hole Diameter     | 2.1mm                 | 1.7mm                 |
| 環境作業溫度               | Operating Temperature | -40°C to +105°C       | -40°C to +105°C       |

## TECHNICAL DATA

|   |                                |      |      |
|---|--------------------------------|------|------|
| 連接符合標準<br>Connection in acc. with standard EN-VDE |                                |      |      |
| 額定電流 I <sub>n</sub>                               | Nominal Current I <sub>n</sub> | 41A  | 76A  |
| 額定橫截面   | Nominal Cross Section          | -    | -    |
| 最大負載電流  | Maximum load current           | 41A  | 76A  |
| 絕緣材料  | Insulating Material            | PA   | PA   |
| 阻燃等級,符合UL94<br>Inflammability class acc. to UL94  |                                | V0   | V0   |
| 額定電壓,UL/CUL<br>Nominal voltage, UL/CUL            |                                | 600V | 600V |
| 額定電流,UL/CUL<br>Nominal current, UL/CUL            |                                | 36A  | 66A  |

