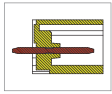
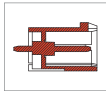


# MPE040 PCB Connector, Header (reflow soldering)



MPE040-381



MPE040-508

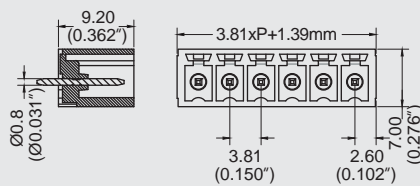


## DIMENSIONS/POSITIONS

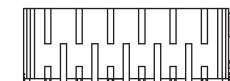
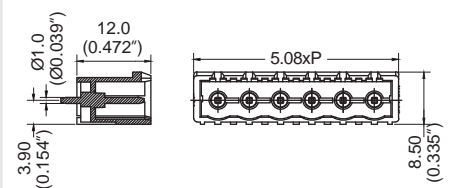
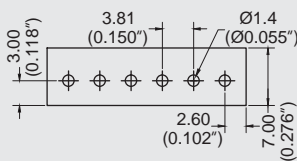
DIMENSIONS/POSITIONS		MPE040-381	MPE040-508
間距	Pitch	3.81mm	5.08mm
位數	Poles	2 ~ 12Poles	2 ~ 12Poles
塑膠本體	Housing Material	LCP	LCP
PCB孔徑	PCB Hole Diameter	1.4mm	1.6mm

## TECHNICAL DATA

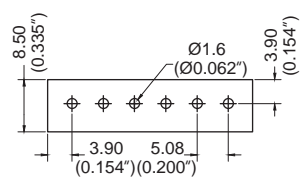
連接符合標準 Connection in acc. with standard EN-VDE			
額定電流 I <sub>N</sub>	Nominal Current I <sub>N</sub>	10A	16A
額定橫截面	Nominal Cross Section	-	-
最大負載電流	Maximum load current	10A	16A
絕緣材料	Insulating Material	LCP	LCP
阻燃等級,符合UL94 Inflammability class acc. to UL94		V0	V0
額定電壓,UL/CUL Nominal voltage, UL/CUL		300V	300V
額定電流,UL/CUL Nominal current, UL/CUL		10A	16A



PCB Layout



PCB Layout



MPE